



Professional label/receipt printers

Bridge the gap between desktop and mobile printing with the TD-2000 range of powered compact printers

- Improve worker productivity – portability of a mobile printer, print speed, features and media capacity of a desktop
- Reduce worker downtime – battery powered optional model can be wirelessly connected to mobile print stations reducing back office print runs
- Versatile & efficient – print wirelessly from smartphones, tablets and PCs
- Powerful Windows™ barcode label design/print software application included
- Print from various operating systems/software using Brother ESC/P printer language (ZPL® emulation compatible also) for seamless integration into new and existing solutions



Versatile – Build TD-2000 to your requirement

The TD-2000 models are supplied as standard with a CD-ROM, user guide, USB cable, AC adapter and powerful labelling software.

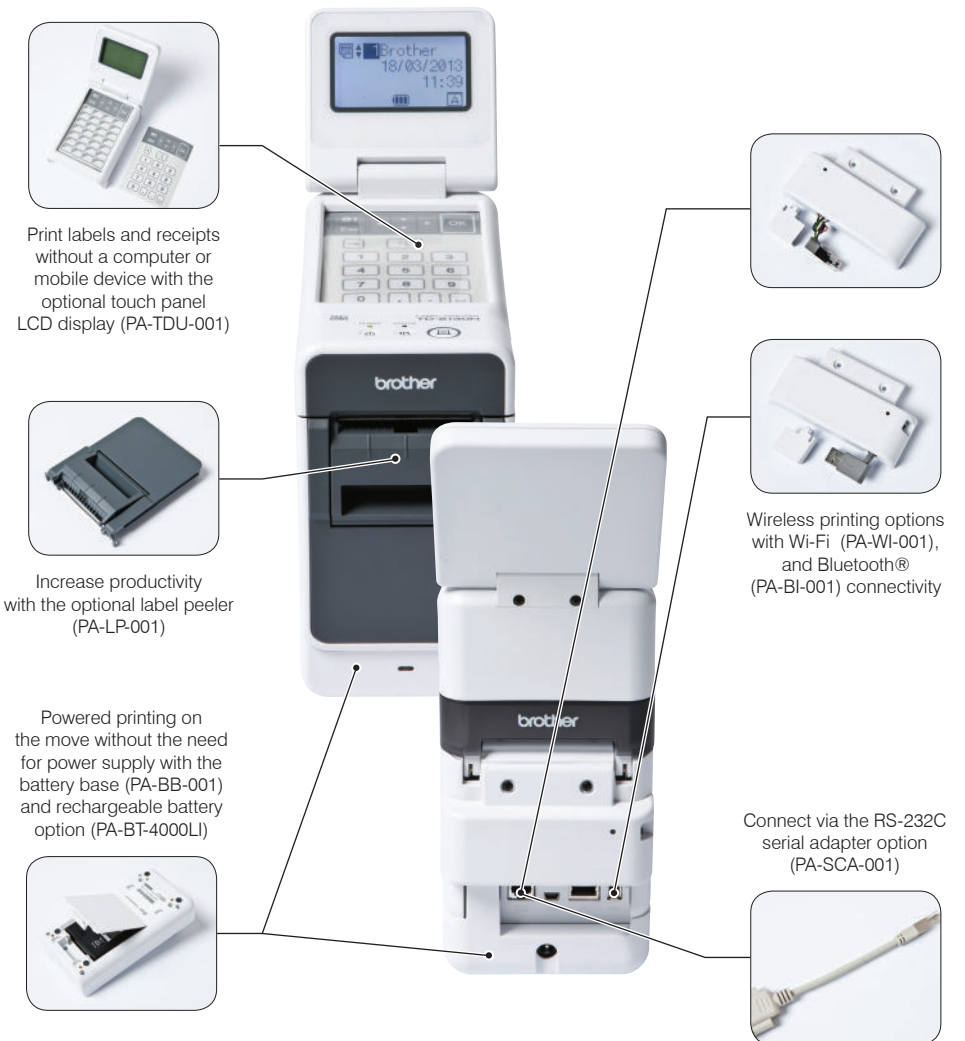
As each printing application is different, there are numerous optional extras available* to fulfil virtually any requirement (see below). Such customisation can help keep costs to a minimum by selecting only those options which you require.

Mobile meets desktop

Increased efficiency for labelling applications

With over 20 years experience of developing professional label machines, Brother has added to the recently launched TD-4000 range with the new TD-2000 2.2" labelling & receipt print solution. The TD-2000 offers the performance, features and media capacity of desktop printers but can be powered by a rechargeable battery pack and print wirelessly on a trolley, a busy counter or virtually anywhere in the workplace.

Due to its spindle-less design, the TD-2000 can accommodate rolls of up to 5" in diameter meaning less time wasted reloading media. The range is made of three models which vary in print resolution and connectivity. All three models come with USB and a serial interface port while the network models (2120N & 2130N) come with additional Ethernet and USB host ports with the option to add a Wi-Fi® or Bluetooth® interface module.



*applicable to TD2120N and TD2130N models only. The TD2020 base model cannot be customised with the above options with the exception of the serial adapter.



Retail and food applications

Increase productivity & efficiency by enabling busy retail workers to print a wide range of labels on the shop floor by incorporating TD-2000 with a trolley/mobile workstation. With its compact design, the TD-2000 is also ideal to use on crowded retail desktops and counters without sacrificing valuable workspace for a standard sized desktop printer. Sharp text, logos and barcodes printed quickly on high quality Brother media can help contribute to enhanced customer satisfaction at the counter or check out.



The continuous roll offers the ability to create larger signage on demand



Ensure the safety of your customers with clear 'Use By' labels



Push through slow moving stock by creating sales labels whilst on the move in store



Provide your customers with clear/concise sales receipts

Typical applications include:

- Pricing labels
- Receipts
- Shelf edge labels
- Barcode labels
- Sale/mark-down/discount pricing labels
- Use by labels
- Loyalty discount/gift vouchers

Healthcare, medical and laboratory

The Brother TD-2000 can help improve information flows within the healthcare industry by printing clear, high quality labelling to maintain safety and traceability.

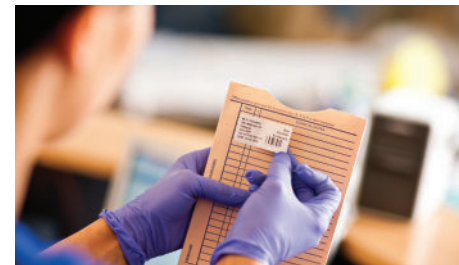
The network models (2120N & 2130N) provide healthcare workers with the option of wirelessly printing a variety of barcode labels quickly and whenever needed in the laboratory, pharmacy, front desk or even at the patient's bedside. With support for the most common barcode protocols, all models are ideally suited to any labelling task in healthcare.



Label sizes can be adjusted to fit different sized tablet containers



Print basic patient details when required



Locate patients' records and other important documentation quickly with an identification label



Ensure that patients' samples are clearly and correctly identified

Typical applications include:

- Patient wristbands
- Prescriptions
- Dosage labels
- Specimen and pathology labels
- Appointment cards
- Microscope slide labels



Solutions for Windows™ Systems with b-PAC SDK

Developed for advanced users such as system integrators, by adding just a few lines of programming code, label printing is possible from many Microsoft® Windows™ applications.

- Create a label template using P-touch Editor 5 and save the file to your PC.
- Using the b-PAC SDK, send the relevant commands to add your text/barcode/images to the label template.
- Issue the print command from your program.
- The b-PAC SDK will then create and print the label containing your information.

Solutions for Smartphone/Tablets with free Mobile SDK

The Mobile Software Development Kits (SDK) makes it easy for developers to incorporate label and receipt printing into mobile apps. There are SDKs available for iOS™, Android™ and Windows Mobile™.



Increased freedom and mobility - print wirelessly from virtually any tablet or handheld device



Simply apply your custom designed label

Professional software solutions

Instant 'out of the box' labelling solution

Each model is a complete labelling solution which comes with a professional label design and printing software application developed by Brother with advanced design tools and features included as standard.

P-touch Editor 5

Supplied as standard, you can create your own custom labels with pixel precision by using this powerful software solution. With features such as support for over 15 barcode protocols, advanced image dithering to print high quality greyscale images, and the ability to link to data contained in Excel™ spreadsheets for batch printing of labels, any label design is possible.

Solutions for existing and legacy systems

Support for ZPL® applications without extra development costs. Simply connect the TD-2000 and adjust the built-in settings to whatever your system requires.

Built-in Brother ESC/P and Brother template modes to print from non- Windows™ based PCs and devices.

For more information or to download the SDKs please visit the developer centre at www.brother.eu/developers



Brother RD label rolls are made of high quality paper, and are easy to install

Brother RD label rolls

The TD-2000 series uses Brother RD labels. Available in die-cut and also continuous length rolls, they offer high quality printing, added protection against marks and scuffs and are available in various sizes.

Environmentally sourced rolls

Brother takes its environmental responsibilities seriously, and as such, the paper used in the manufacture of Brother RD label rolls is sourced from sustainable forests.

Brother RD labels also contain no Bisphenol-A, a common chemical used in the manufacture of inferior labels. As such, Brother RD labels are safe to use in the food industry, and also pose no hazard to the health of infants and young children.



Many different types of labels can be printed with the TD-2000 series



The adhesive used in Brother RD rolls has been certified safe for food labelling

Pre-sized paper labels

RD-S05E1 1552/Roll 51mm x 26mm (white)

Receipt paper roll

RD-S07E5 Continuous Roll 58mm x 86m

Brother rolls can also be customised to any specification (subject to minimum order quantities).

Specifications

	TD-2020	TD-2120N	TD-2130N
Printing & Options			
Printing Technology	Direct Thermal		
Printing Resolution	203dpi	203dpi	300dpi
Print Speed (Depends on the media used)	Maximum 152.4 mm/sec (6 ips) (Under Brother standard environment)		
Maximum Print Width	Maximum 56 mm		
Maximum Print Length	Maximum 1 m		
Minimum Print Length	6 mm		
Buttons	Power button, Feed button, Print button		
Printer Memory	6 MB or maximum 99 templates		
AC Power Supply	AC Adapter (100 - 240 V 50/60 Hz)		
Release Mode	Standard: Continuous, tear off Optional: Not supported	Standard: Continuous, tear off Optional: Peeled	
Optional Extras*	Not supported	Rechargeable Battery (PA-BT-4000LI), Battery Base (PA-BB-001), Touch Panel Display (PA-TDU-001), Label Peeler (PA-LP-001), Bluetooth Interface (PA-BI-001), WLAN Interface (PA-WI-001) Serial Adapter (PA-SCA-001)	
Size			
Weight	Approximately 1.32 kg	Approximately 1.34 kg	
Dimensions	Approximately 110 mm (W) x 215 mm (D) x 172 mm (H)		
Interface			
USB	USB Ver 2.0 (Full Speed) (mini-B, Peripheral)		
Serial	RS232C Original serial cable - PA-SCA-001*		
Wired LAN	Not Supported	10/100BASE-TX	
USB Host Port	Not supported	Supports only PA-WI-001 (optional) or barcode readers ** Bluetooth® Ver.2.0+EDR (Class 2) Bluetooth® -compatible profiles SPP (Serial Port Profile) OPP (Object Push Profile) BIP (Basic Imaging Profile)	
Bluetooth® The Bluetooth® interface (optional) is required	Not supported		
WLAN (the WLAN interface (optional) is required)	Not supported	Wireless LAN IEEE802.11 b/g/n (Infrastructure Mode/Adhoc Mode)	
Operating Environment			
Operating System Support	Microsoft®Windows® XP/Windows Vista®/ Windows® 7/Windows®8	Microsoft®Windows®XP/Windows Vista®/Windows®7/Windows®8, Microsoft® Windows Server® 2003/2008/2008 R2/2012	
SDK Support	Windows® b-PAC	Windows® b-PAC SDK, iOS®, Android™, Windows Mobile™	
Printer Commands	P-touch Template2.0 (includes ZPLII® emulation), Raster, ESC/P		
Printer Driver	Microsoft® Windows® XP/ Windows Vista®/Windows® 7/ Windows® 8	Microsoft® Windows® XP/Windows Vista®/Windows® 7/ Windows® 8/ Microsoft® Windows Server® 2003/2008/2008 R2/2012	
Operating Temperature	Operate: 5C to 40C	Operate: 5C to 40C Charge: 5C to 40C	
Operating Humidity	20 to 80% (No condensation, Maximum wet bulb temperature: 27C)		
Storage Temperature	-20 C to 60 C		
Storage Humidity	20 to 80% (No condensation, Maximum wet bulb temperature: 45C)		

*requires additional purchase

**When using the RS-232C interface with an external barcode reader it must be used with the PA-SCA-001 (RJ25 to DB9M serial adapter)



Brother International Europe Ltd

Brother House, 1 Tame Street, Audenshaw,
Manchester M34 5JE
Tel: +44 (0)161-330 6531
www.brother.eu



www.logiscenter.com
902 050 030



www.logiscenter.it
02 479 216 97



www.logiscenter.de
info@logiscenter.de



www.logiscenter.pt
308 800 842

About LOGISCENTER

Grupo Logiscenter is the leading provider in Europe of automatic identification and data capture equipments. Our products include barcode printing and reading devices, mobile computing devices, wireless access points, identification cards, and consumables.

Reasons to work with us

Our customers come first. Our objective is not only selling our products but also holding a long-lasting relationship with our customers, based on the benefits and advantages we create for you and your company.

The best brands. We offer products from the best manufacturers worldwide.

Expert technical support team. Our support staff are experts in the products we sell. But not just the products, they can tell you the best solution for your particular problem or need.

Largest stock. We have a permanent stock of more than 12,000 products.

Same-day shipping. For all orders placed and confirmed before 16:00 on working days.

Best prices. With Logiscenter, you can be sure that you are paying a fair price for your products we will not overcharge you.

Easy returns. Damaged or defective products can be returned easily, for an exchange or reimbursement.

Our Brands



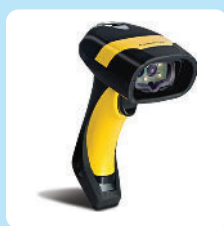
MOTOROLA



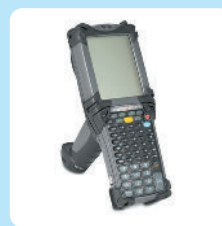
datamax • o'neil



Label printers



Barcode readers



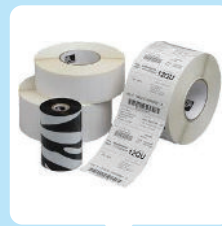
Data terminals & PDA



PVC card printers



RFID



Consumables
(labels, ribbons, PVC cards)



**All Brands
Technical Service**